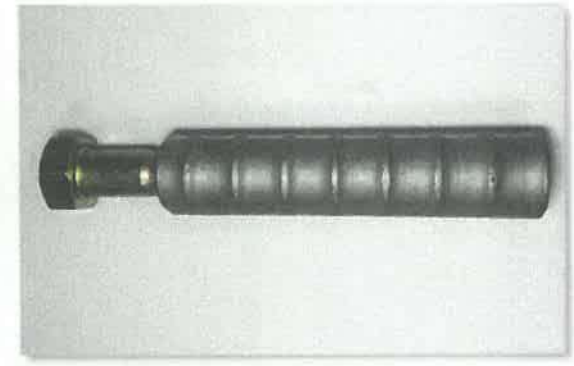
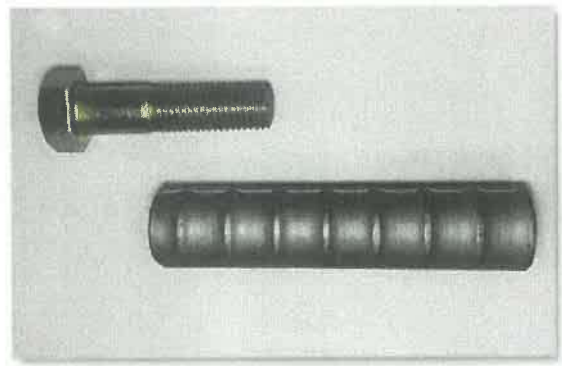
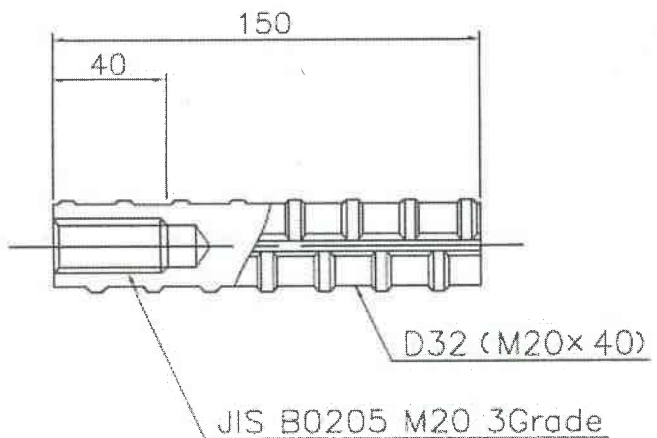
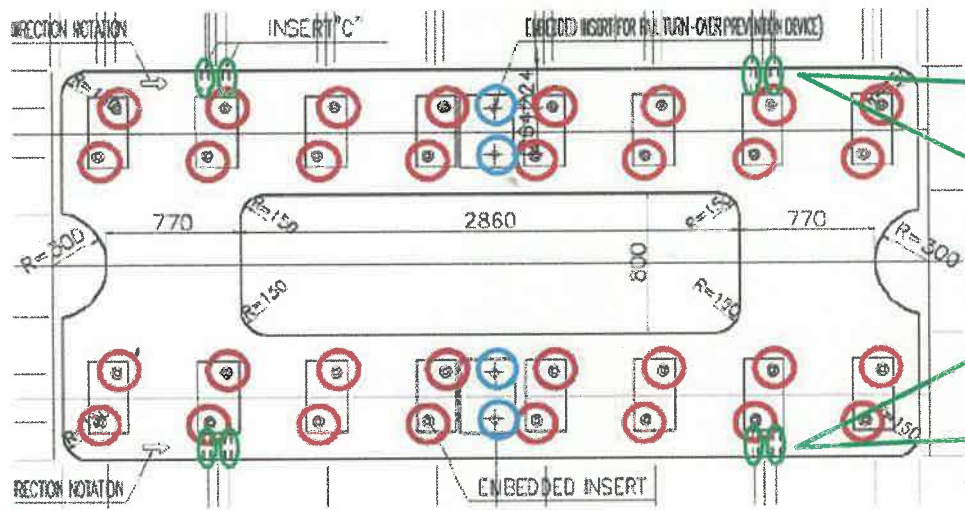


# Abstract of Embedded Insert For Temporary supporting of Slab Track

Temporary supporting of Slab Track



Estimated quantity for NHSRCL  
**TOTAL : 1.7 Million pieces**  
 T-1: 0.5 Million pieces  
 T-2: 0.8 Million pieces  
 T-3: 0.4 Million pieces

Material: SD295A (JIS G 3112) + Dacrotized  
 [Note] Equivalent codes can be applied.



# Embedded Inserts

For Rail Fastener  
of Track Slab



- Requirements for both rail fastening and electric insulation.

For Rail Turnover  
Prevention Device



- Requirements for both rail restraining and electric insulation.

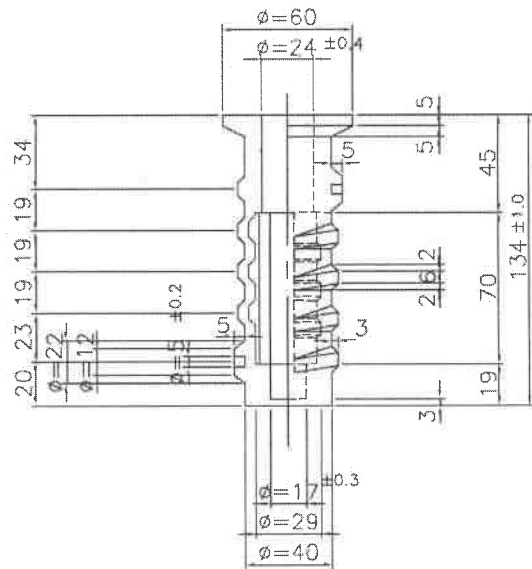
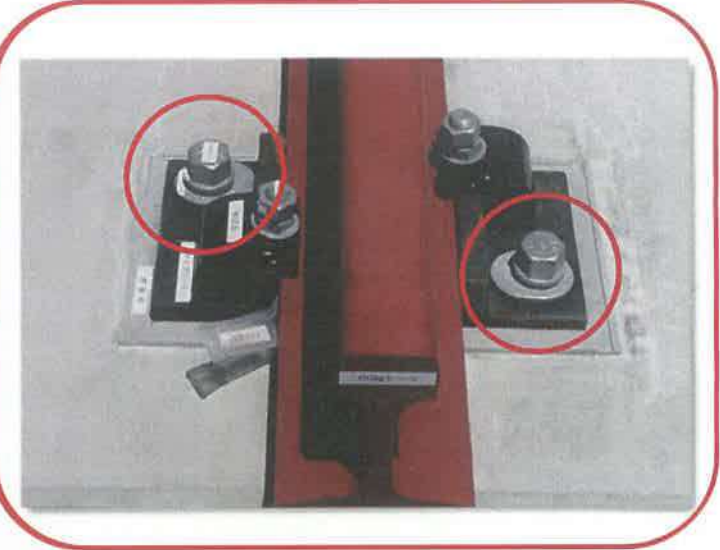
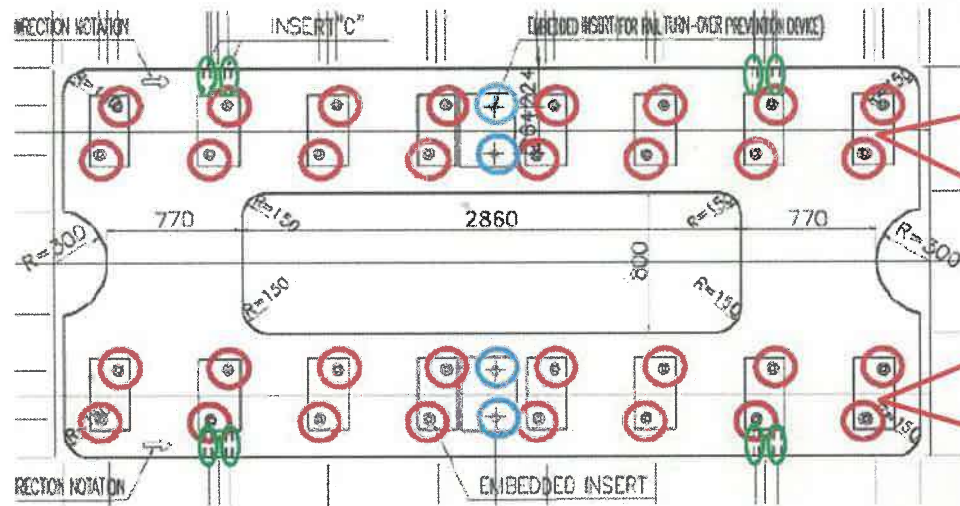
For Temporary  
Supporting of Slab Track



- For fixing position of track slab before CAM injection to bear weight of slab track .
- Not required electric insulation.

[Note] \* Not included bolts regarding the purchase of embedded inserts

# Abstract of Embedded Insert For Rail Fastener of Slab Track



Material: BMC\* +SD345 (JIS G 3112)

\* BMC=Bulk Moulding Compound

[Note] Equivalent codes can be applied.

Estimated quantities for MAHSR  
**TOTAL : 6.5 Million pieces**  
 T-1: 2.0 Million pieces  
 T-2: 3.0 Million pieces  
 T-3: 1.5 Million pieces