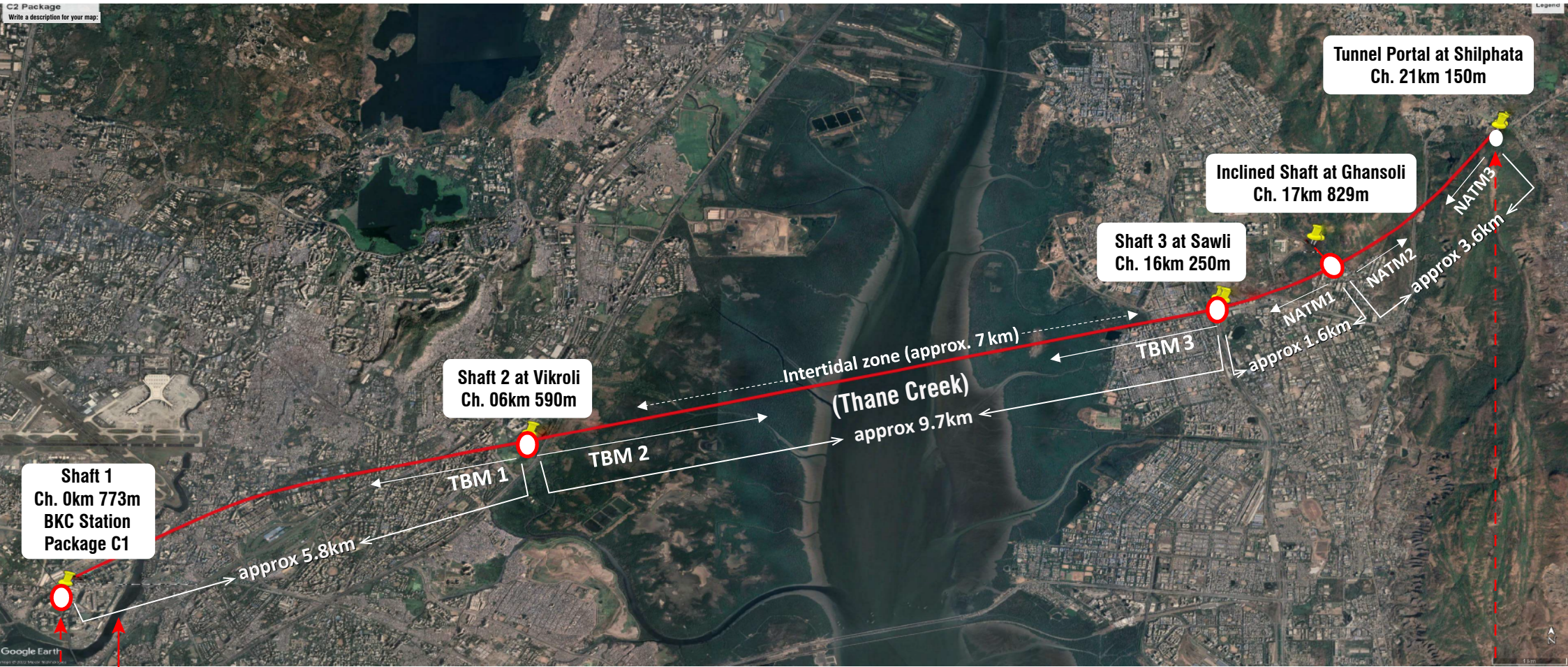


TOWARDS MUMBAI

TOWARDS AHMEDABAD

C2 Package
Write a description for your map:



Shaft 1
Ch. 0km 773m
BKC Station
Package C1

Shaft 2 at Vikroli
Ch. 06km 590m

Shaft 3 at Sawli
Ch. 16km 250m

Inclined Shaft at Ghansoli
Ch. 17km 829m

Tunnel Portal at Shilphata
Ch. 21km 150m

Mithi River

C2 PACKAGE

Keys:-

- ★ Tunnel Length under C2 package: 21 km (approx.)
- ★ Tunnel portion under Thane Creek: 7 km (approx.)
- ★ Tunnelling through New Austrian Tunnelling Method (NATM): 5 km (approx.)
- ★ Number of Tunnel Boring Machine (TBM): Three (3) number

Depth of the shafts:-

- ★ Shaft 1 - 36m
- ★ Shaft 2 - 56m
- ★ Shaft 3 - 39m
- ★ Inclined shaft - 42m